

Eastbourne

With Woking Leisure Centre 50+ Club

29 September / 2 October 2025

With its colourful promenades, Victorian pier, quaint shopping streets and rich history, it is not hard to understand why Eastbourne has been attracting holiday makers for well over 100 years. Our tour takes us to an array of delights in the area - from a nostalgic steam train ride to an old court house and jail with links to a history of smuggling, and even the chance to explore a 15th century castle, this tour is the perfect opportunity to escape from it all and enjoy some coastal downtime.

Monday 29 September - Penshurst Place and Gardens

We set off from Woking Leisure Centre this morning by coach for Eastbourne, first stopping at Penshurst Place and Gardens. This 14th century manor house and its surrounding gardens was once the property of King Henry VIII, passed down to his son King Edward VI and then granted to the Sidney family, who have occupied it for more than 470 years and it remains as a family home today. Visitors can view the impressive Baron's Hall, with its original 60ft high chestnut beamed ceiling, as well as collections of family portraits, antique furnishings, illustrious tapestries and more. Following this, we continue on to the Hotel Cumberland, Eastbourne, our base for the duration of our tour. After settling in we meet local guide Kevin Gordon at the hotel for a short guided tour of the beautiful Eastbourne seafront. We enjoy our evening meal at the on-site restaurant.

Tuesday 30 September - Bolney Wine Estate and Bluebell Railway

Today we spend the morning at the Bolney Wine Estate, where we enjoy a fascinating introduction to the history and production of English wines as we're taken on a tour of the vineyard and winery, learning how Bolney's award-winning wines are created. After the tour concludes we have the chance to enjoy the fruits of their labours with a tasting session. Afterwards we travel to Sheffield Park Station, which houses the Bluebell Railway Museum, a chance to learn about the history of the railway and development of locomotives from the 1600s to today. There is also an interactive exhibit located in the locomotive shed, as well as a café and gift shop at the station. After time to explore, we board the steam train for a scenic return journey through the East Sussex countryside to East Grinstead Station and back.

Wednesday 1 October - Pevensey Old Court House Museum, Herstmonceux Castle and Seaford Museum

Our first stop this morning is the seaside village of Pevensey, to visit the Old Court House Museum. Dating back to the 1700s, the building was still in use as the town hall and jail until 1886. Visitors can view the original court dock, cells and exercise yard as well as countless artefacts that give insight into the history of Pevensey, including the dramatic and violent story of the smuggling trade which took place there. Following this, we visit Herstmonceux Castle. This 15th century red-brick moated castle stands within 300 acres of carefully maintained woodland and gardens. The castle itself fell into ruin in 1777 and the interior was entirely stripped - what we see now is a fascinating construction from the 1900s salvaged mostly from other stately homes, making for some incredibly unique furnishings to view. We then travel to Seaford for a visit to Seaford Museum with local guide Kevin Gordon. The museum displays the history of the town, from its once-bustling port to how the town's coastline defended itself from impending invasion by Napoleon. Our evening meal is taken at leisure locally.

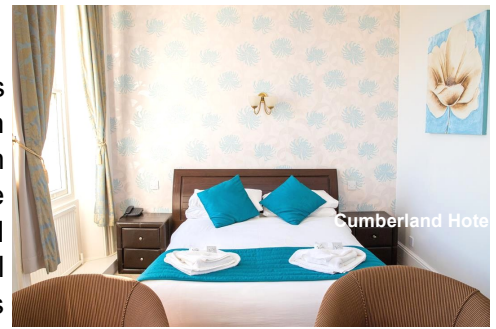
Thursday 2 October - Farleys House and Gallery

We check out of our hotel this morning and make our way to Farleys House and Gallery. Tucked away in the Sussex countryside, Farleys once served as a key meeting place for many of the leading figures in 20th century art. Its vibrant interior includes brightly coloured and oddly shaped rooms filled with eclectic collections of artworks, offering a glimpse into the remarkable lives of its former occupants Lee Miller and Roland Penrose. We enjoy a guided tour of the house, with time for lunch at leisure afterwards before we depart for the remainder of our homeward journey back to Woking Leisure Centre.



Accommodation - Hotel Cumberland, Eastbourne (3 star)

Perfectly positioned overlooking the flower-decked promenade, famous bandstand and legendary Eastbourne Pier, the Hotel Cumberland makes an ideal base for exploring the surrounding area. Each comfortable room provides an en-suite bathroom, television, hairdryer, and tea and coffee making facilities. Our evening meal on the first night of our stay and breakfasts are taken in the on-site restaurant which offers stunning coastal views. Evening meals are 3 courses with minimum 3 choices per course plus tea and coffee afterwards, and full English breakfast buffet.



| | |
|---|-----------------|
| Tour Price per person | £ 537.00 |
| Deposit per person - due not later than 16/05/25 | £ 120.00 |
| Single Room Supplement | £ 85.00 |

(The final balance is due not later than 04/08/25)

Travel insurance—If you have not already arranged cover, please visit <https://normanallen.b2ctravel.co.uk> or phone 01371 705159 who offer travel insurance. For any travel insurance purchase, you should check the individual policy wording provided to you carefully to ensure this meets the specific needs for your chosen holiday.

Your tour includes:

- 1 nights' accommodation on a half board basis and 2 nights' accommodation on a bed and breakfast basis at the Hotel Cumberland, Eastbourne
- 4 days' executive coach services with Gastonia Coaches
- Portage on arrival and departure at hotel
- Admission to Penshurst Place and Gardens
- Admission, tour and tasting at Bolney Wine Estate
- Return journey on Bluebell Railway
- Admission to Seaford Museum
- Visit to Pevensey Old Court House Museum
- Admission to Herstmonceux Castle with guided tour
- Admission to Farleys House and Gallery with guided tour

Your tour excludes:

- Travel Insurance
- Additional entrance fees to places of interest other than those detailed in the itinerary
- Dinner, lunches and refreshments, other than those detailed in the itinerary
- Gratuities

The Package Travel, Package Holidays and Package Tours Regulations 1992 require us to provide security for the monies that you pay for the package holidays booked from this brochure and for your repatriation from abroad in the event of our insolvency. We provide this security by way of a bond held by ABTA (W9928). Air tours are ATOL protected by the Civil Aviation Authority. Our ATOL number is ATOL 3683. Please see our booking conditions for more information.

For the latest travel advice from the Foreign, Commonwealth & Development Office including security and local laws, plus passport and visa information see www.gov.uk/travelaware.

At any time prior to the tour departure, we reserve the right to make changes (of equal value or difference will be refunded) to attractions, visits and excursions should such suppliers' requirements and/or unforeseeable circumstances make it essential to do so. During the tour, details in the itinerary may be subject to alteration at the discretion of the tour manager and in accordance with the wishes of a clear majority of the passengers. We reserve the right to cancel this tour not later than 8 weeks before departure, if insufficient bookings have been received to justify its departure.

You can obtain Booking Forms and Booking Conditions from your Group Organiser. Please send completed booking forms and payments (cheques payable to Norman Allen Group Travel Ltd) to your Group Organiser, name address below:

**Diann Arnfield
Woking Leisure Centre 50+ Club
C/o Elmerston
Colekitchen Lane, Gomshall
Guildford
GU5 9LH
diannarnfield@gmail.com / 01483 203464**

